

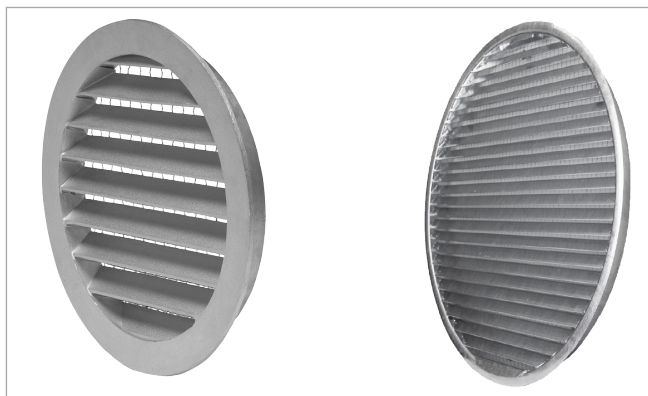
# YGC

External wall grille



# External wall grille

YGC



## Description

Valve for fresh air intake and exhaust air. Designed with a fixed louver.

Ø 80-1250 is equipped with net. Mesh width 10 × 10 mm.

Screws or nails connect to an external wall.

Delivery as standard with bird net.

## IMPORTANT

### Surface characteristics of untreated aluminum grilles

YGC grille is manufactured from untreated aluminum, which naturally reacts with oxygen in the atmosphere. Over time, this process leads to the formation of a white, powdery surface layer known as aluminum oxide. This is a normal and expected characteristic of untreated aluminum exposed to outdoor environments and does not affect the structural integrity of the grille.

Please note that the appearance of the grille surface may be influenced by adjacent facade materials, such as concrete, lime, or similar alkaline substances. These materials can cause discoloration, staining, or accelerated surface changes due to chemical interactions.

In addition, the installation environment plays a significant role in the long-term aesthetics and surface condition of the grille. Exposure to seawater, airborne salt particles, industrial pollutants, or other chemically aggressive atmospheres may intensify surface reactions and lead to more pronounced changes in appearance.

It is also important to be aware that the white oxidation layer formed on untreated aluminum may, over time, leave visible marks or streaks on the facade surface beneath the grille, especially in areas exposed to rain or moisture runoff.

For applications in harsh or chemically active environments, or in cases where the natural white surface appearance or potential marking of the facade is not acceptable, we strongly recommend the use of powder-coated aluminum grilles. Powder coating provides enhanced protection against environmental influences and helps maintain a consistent visual appearance over time.

## Order code

Product

Type

YGC

YGC

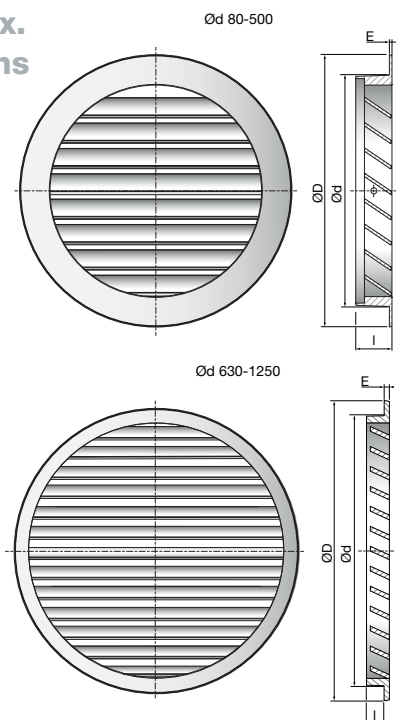
aaa

Connection dim. Ød

Ød 80 - 1250

Example: YGC-160

## Min. - max. dimensions



Ød nom	ØD mm	I mm	E mm	A <sub>f</sub> m <sup>2</sup>	Weight Kg
80 *	98	10.0	3.5	0.003	0.10
100 *	123	19.5	2.5	0.006	0.13
125 *	149	19.5	2.5	0.009	0.18
150 *	173	19.5	2.5	0.013	0.23
160 *	183	19.0	3.0	0.015	0.27
200 *	223	19.0	3.0	0.024	0.47
250 *	273	21.5	3.5	0.038	0.70
315 *	338	21.0	4.0	0.063	1.09
400 *	440	34.0	6.5	0.079	3.00
500 *	545	34.0	6.5	0.118	5.50
630	670	50	1.5	0.20	10
710	750	50	1.5	0.26	12.4
800	840	50	1.5	0.34	14.6
1000	1040	50	1.5	0.52	21
1250	1290	50	1.5	0.82	35

\* The grill has 2 × Ø4.2 mm screw holes on the side for mounting.  
Ød > 500 mm, no pre-drilled holes for mounting.

A<sub>f</sub> (m<sup>2</sup>) = Free area

## Materials and finish

Grille: Ø80 - 500 Cast aluminium  
Grille: Ø630 - 1250 Galvanised steel

Standard finish: Untreated

Can be supplied powder-coated. Contact Lindab's sales department for further information.

## Maintenance

The grille should be removed to gain access to the duct. The external parts should be wiped with a damp cloth.

# External wall grille

YGC

## Technical data

### Capacity

Air flow rate  $q_v$  [l/s] and [m<sup>3</sup>/h], total pressure drop,  $\Delta p_t$  [Pa], can be seen in the diagrams.

### Sound pressure level in free field (1/4 spherical)

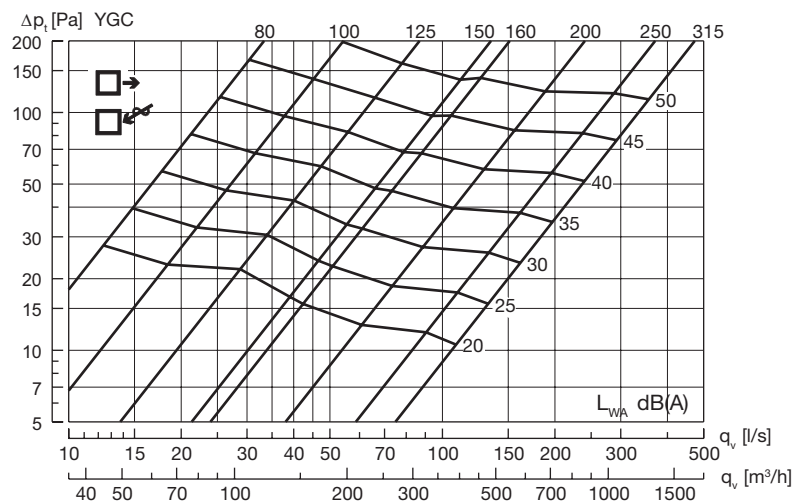
Sound power level  $L_{WA}$  [dB(A)] can be seen in the diagrams.

For sound pressure level at distance X (m):

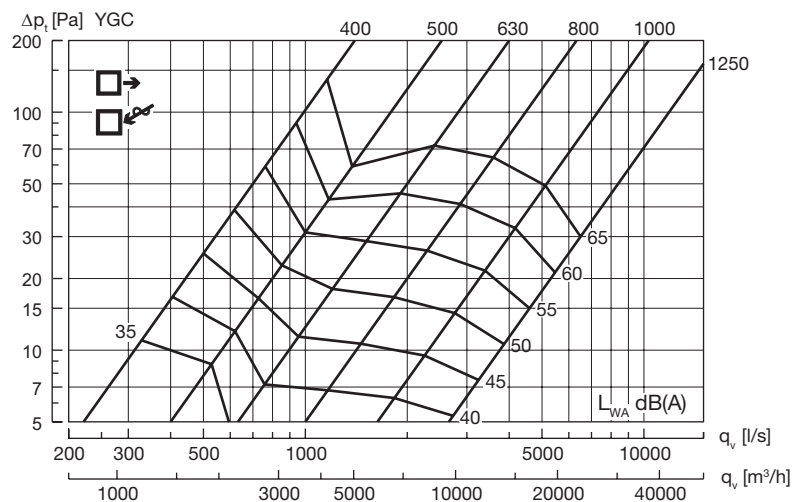
$$L_{pA} = L_{WA} - K, \text{ see table below}$$

X m	1	2	3	4	5	10	20
K dB	-5	-12	-15	-17	-19	-25	-30

### YGC 80–315



### YGC 400–1250





Most of us spend the majority of our time indoors. Indoor climate is crucial to how we feel, how productive we are and if we stay healthy.

We at Lindab have therefore made it our most important objective to contribute to an indoor climate that improves people's lives. We do this by developing energy-efficient ventilation solutions and durable building products. We also aim to contribute to a better climate for our planet by working in a way that is sustainable for both people and the environment.

[Lindab](#) | For a better climate