

Suspension rings

UVH25

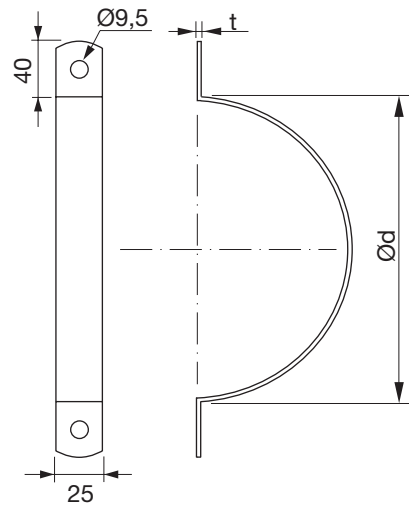


Description

For suspension of circular ducting. For insulated duct it is recommended that the suspension ring is mounted inside the insulation.

UVH25 is sold in pairs.

Dimensions

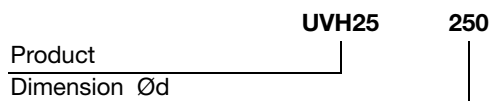


Ød nom	t [mm]	m [kg]
80 *	2,0	0,20
100 *	2,0	0,20
125 *	2,0	0,20
160 *	2,0	0,20
200 *	2,0	0,30
250 *	2,0	0,30
315 *	2,0	0,40
355	2,0	0,50
400 *	2,0	0,50
450	2,0	0,60
500 *	2,0	0,60
560	2,0	0,70
630 *	2,0	0,80

* can be delivered in stainless steel 4404.
Can also be delivered in additional sizes.

The weights given in the table are per pair.

Ordering example

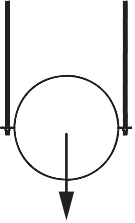


Suspension rings

UVH25

Technical data

Max recommended load for different fire classes.



Installation	Ventilation system					Smoke control system
	R0 no fire class	R15	R30	R45	R60	600 °C 120 min.
Dim	kg	kg	kg	kg	kg	kg
80-355	160	160	160	160	160	160
400-630	160	-	-	-	-	160