



Fan Flange

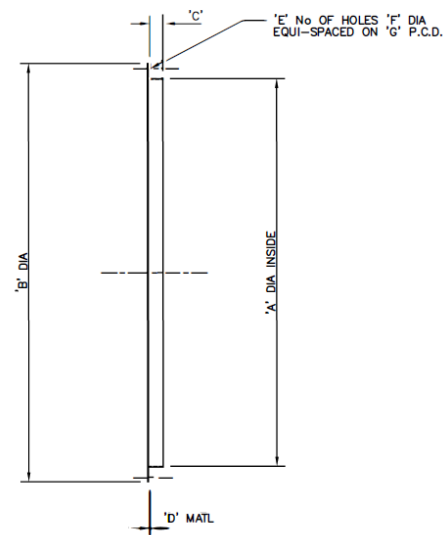
LDDF



Description

The Lindab Dual Drilled Fan Flange is designed for quick, secure, and reliable fan connections. Manufactured from durable hot-dip galvanised steel, it offers long-lasting corrosion protection and strength. With two bolt patterns, it provides versatile installation options and fits directly to the fan case flange. The flange ensures an easy and airtight connection to flexible connectors or ducting, making it the ideal choice for efficient ventilation system assembly.

Dimensions



	A	B	C	D	Hole pattern A			Hole pattern B		
					E	F	G	E	F	G
LDDF 315	315	375	35	1.5	8	M8	355	n/a	n/a	n/a
LDDF 355	350	420	40	1.5	8	M8	395	n/a	n/a	n/a
LDDF400	395	475	45	1.5	8	M10	450	12	M8	438
LDDF450	442	525	45	1.5	8	M10	500	12	M8	487
LDDF500	495	585	45	1.5	12	M10	560	12	M8	541
LDDF560	555	645	45	1.5	12	M10	620	16	M10	605

E - Number of holes
F - Hole Size
G - PCD