

RONDOAirValveDiffuser

Mounting instruction

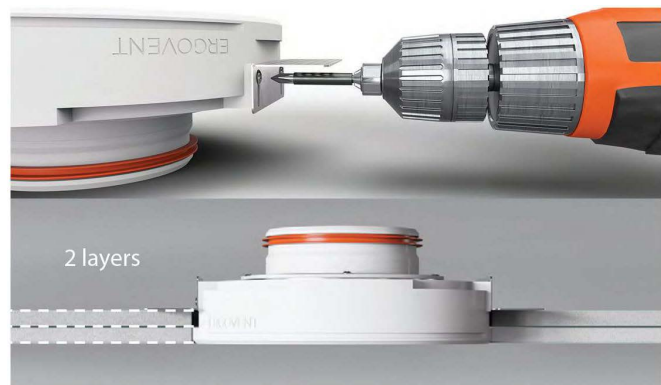


ERGOVENT



Mounting Instruction

RONDO



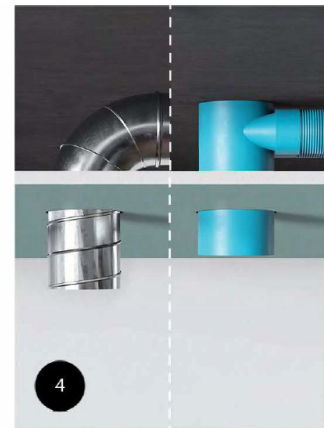
✓ The diffusers can be connected to all air ducts with the standard connection diameters. You can find the method of installation that is the most appropriate to your situation in the instruction manual (p. 2).

✓ Frameless diffusers need slightly more space for their installation under the plasterboard ceiling. The instruction manual contains the exact measurements to be followed for a successful installation of the diffuser.

✓ PU valves inserted in the diffuser connection sleeve (Fig. 5.9, 5.10) are used to balance the ventilation system. The airflow is adjusted by changing the number of removable segments.

Choose the installation method

Follow the visualisations and the description to identify the method of installation you will be using.



Installation method- No. 1

Air duct system: metal air ducts

Connection type: via a soft flexible air duct.

Installation method- No.2

Air duct system: metal air ducts;

Connection type: directly into a metal air duct.

Installation method- No.3

Air duct system: flexible plastic air ducts. (75/90mm)

Connection type: into the connection case tube; Ceiling plasterboards have not been installed yet.

Installation method- No.4

Air duct system: any

Connection type: connect to a solid air duct after the ceiling plasterboards have been installed.

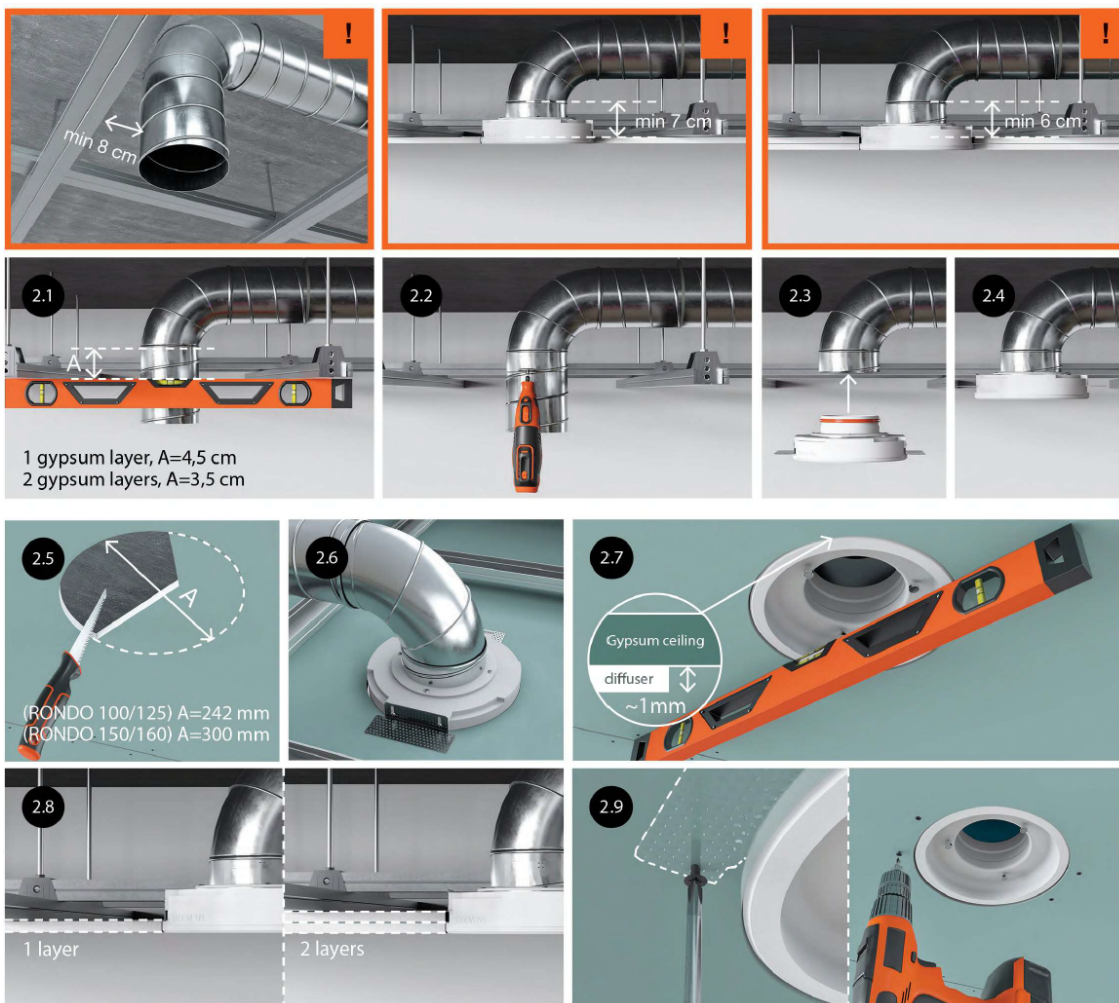
Mounting Instruction

RONDO

Installation Method No.1



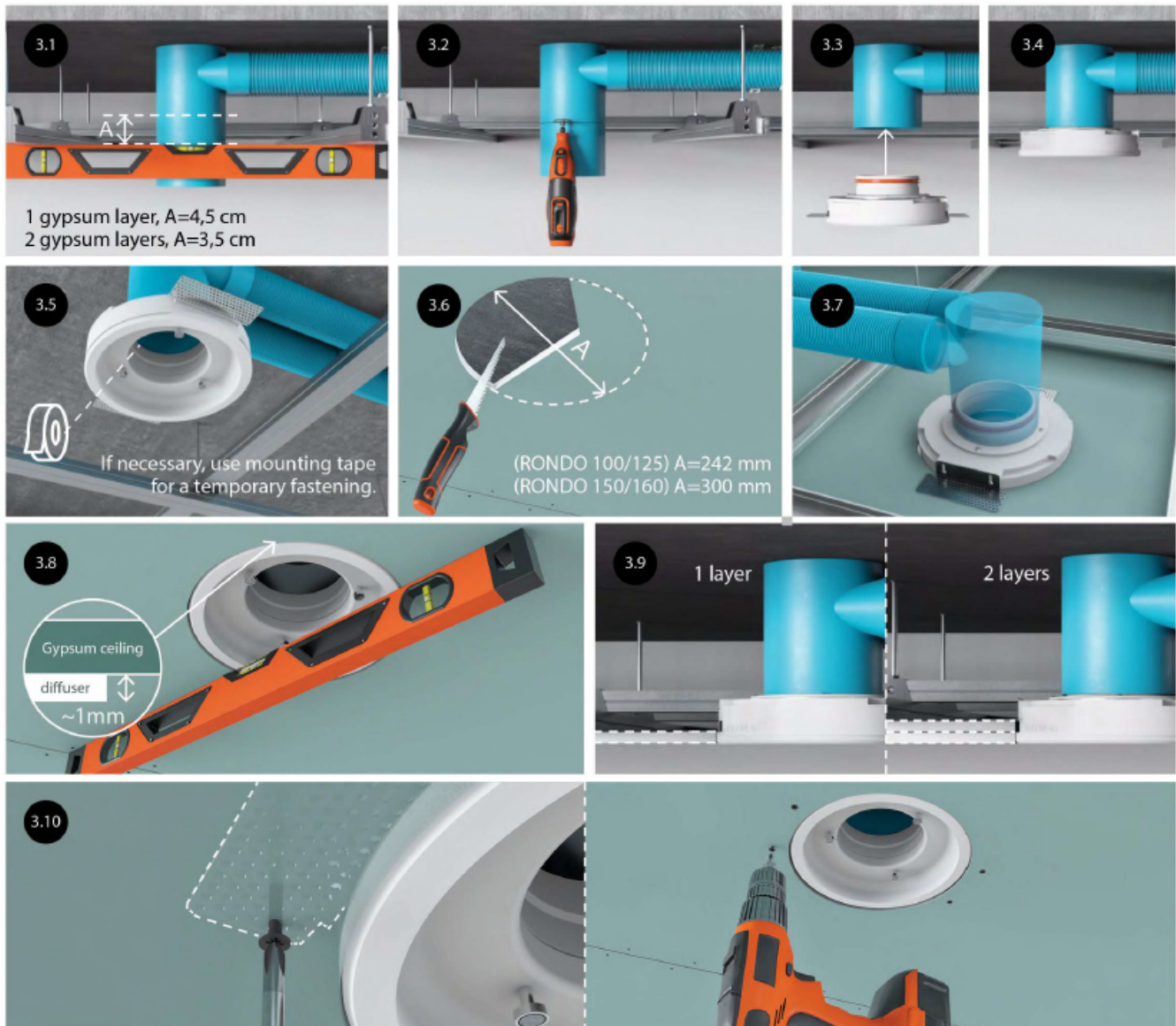
Installation Method No.2



Mounting Instruction

RONDO

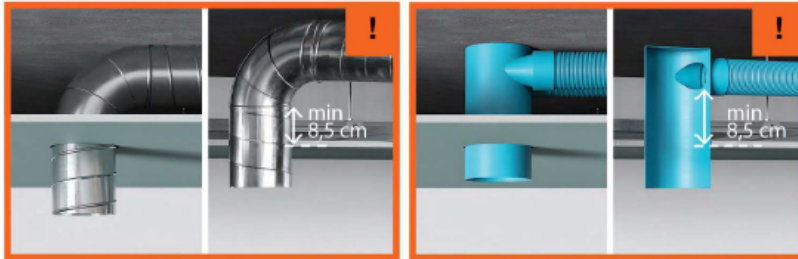
Installation Method No.3



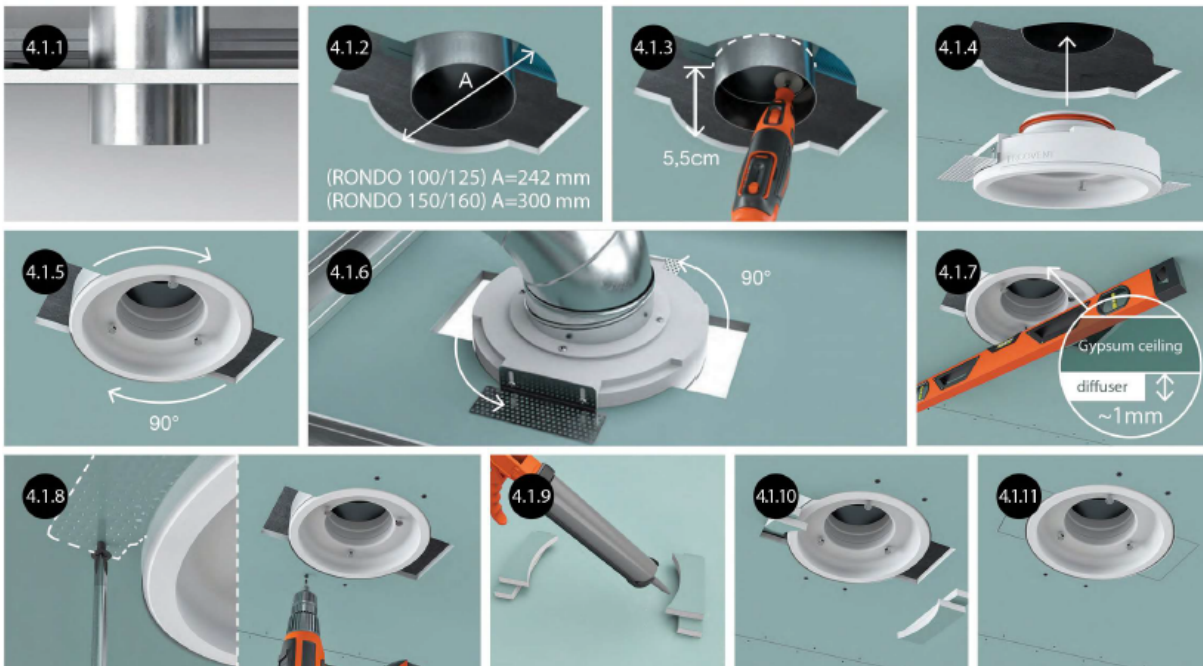
Mounting Instruction

RONDO

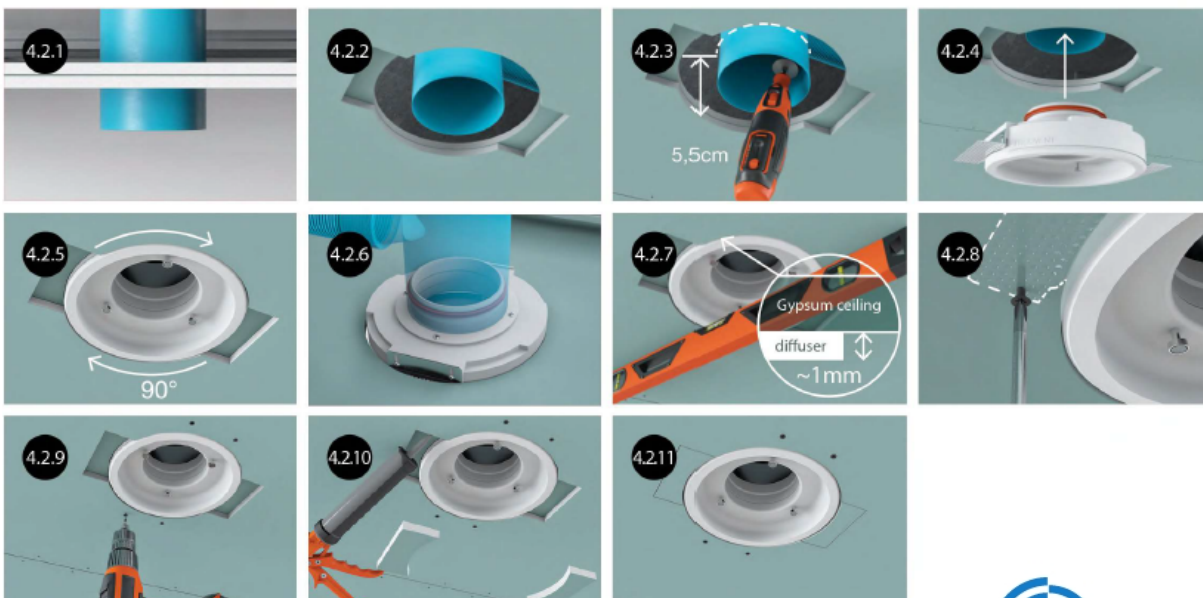
Installation Method No.4



1 LAYER ▼



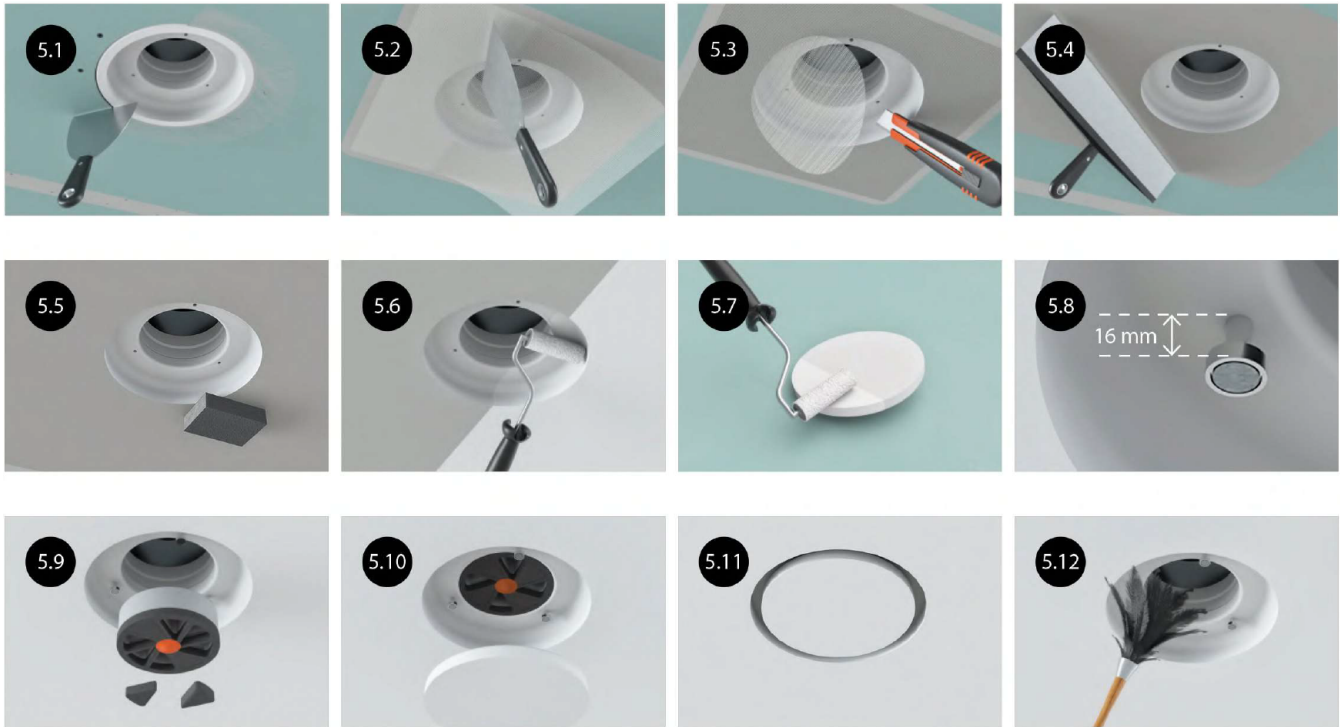
2 LAYERS ▼



Mounting Instruction

RONDO

Instructions for the finishing



For the finish, we recommend using finishing techniques as advised by finishing specialists.

Remove dust from the surfaces and gaps where the filler will be applied. Apply primer to the surfaces.

Use a recommended filler for filling in the gaps.

To prevent the cracking of the joining seam, we recommend reinforcing the whole surface of the diffuser with a thin glass fabric (Fig. 5.2).

Apply a deep primer to the surfaces treated with filler before painting; use a moisture resistant primer for humid rooms.

To paint the ceilings in humid rooms, use a moisture resistant ceiling paint specifically designed for such premises.



Most of us spend the majority of our time indoors. Indoor climate is crucial to how we feel, how productive we are and if we stay healthy.

We at Lindab have therefore made it our most important objective to contribute to an indoor climate that improves people's lives. We do this by developing energy-efficient ventilation solutions and durable building products. We also aim to contribute to a better climate for our planet by working in a way that is sustainable for both people and the environment.

[Lindab](#) | For a better climate