



LINDAB RING LEADER AIR VALVE FIXING RING

FIXING LABOUR & TIME CONSTRAINTS!

Ring Leader
in action!



Sizes Available:

100mm

125mm

150mm

200mm

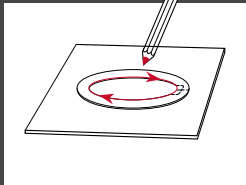




Installation without aggravation!

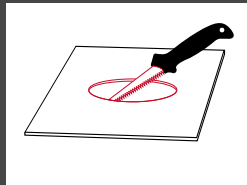
SUSPENDED CEILINGS

STEP 1



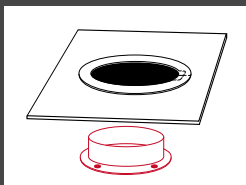
Using the Ring Leader as a template, draw around the inner edge to mark the ceiling tile.

STEP 2



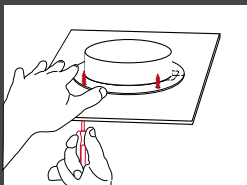
Cut out the ceiling tile to the shape of the template.

STEP 3



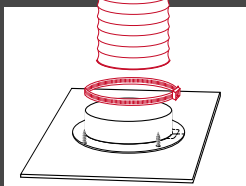
Lay the Ring Leader flat on top of the ceiling tile (branding face up).

STEP 4



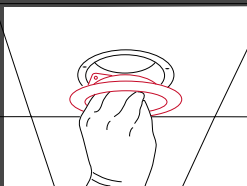
Screw the mounting ring to the Ring Leader. *

STEP 5



Connect the ducting onto the mounting ring using your hose banding.

STEP 6

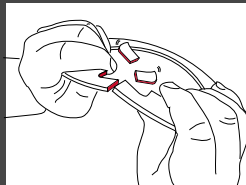


Twist in the air valve to finish (see setting).

* (Cordless / impact driver can also be used on a low torque setting).

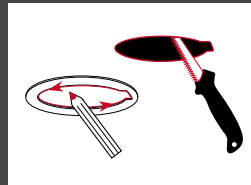
SOLID CEILINGS

STEP 1



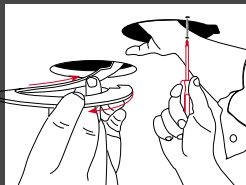
Snap along the perforations to split the ring. This allows the Ring Leader to be inserted through the ceiling hole. See step 3.

STEP 2



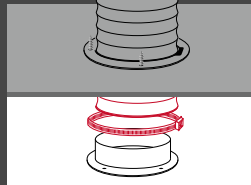
Using the Ring Leader as a template, draw around the inner edge to mark the ceiling. Cut out the plasterboard to the shape of the template.

STEP 3



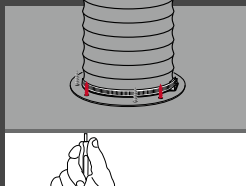
Twist the Ring Leader through the hole, aligning the notches. Whilst holding the Ring Leader against the ceiling, screw into place. *

STEP 4



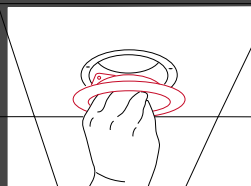
Pull Flexi-Duct through the ceiling hole & connect to the mounting ring using your hose banding.

STEP 5



Push the assembly back through the hole, aligning the hose band clip with the notch. Simply screw the mounting ring into place. *

STEP 6



Twist in the air valve to finish.

